

County: Bergen
 District: Fort Lee School District
 467 Stillwell Avenue
 Fort Lee, NJ 07024-2140

2021-2022
 Principal: Mr. William Diaz
[School Website](#)
 201-585-4660

	1,228 Total Students		05-08 Grades Offered		7.3% English Learners
	15.8% Students with Disabilities		11.9 years Avg Teacher Experience		11.1% Economically Disadvantaged
	12:1 Student to Teacher Ratio				

The summary reports are meant to provide parents, educators, and communities highlights from the district, along with a high-level summary of how well a school or district is performing. We encourage you to use these reports to:

- **Learn more** about this school or district by viewing the detailed report. Use the link in the "Jump to" menu at the top right.
- **Start conversations** with school community members and ask questions. Use the one-page guides on the [Resources page](#) for suggestions.
- **Engage** with your school communities to identify where schools are doing well and where they can improve.

Important Note for 2021-22 Reports: The summary reports will not include information on student growth for the 2021-22 school year due to the cancellation of the New Jersey Student Learning Assessment in 2019-20 and 2020-21. The NJDOE expects to resume reporting on student growth, as measured by median student growth percentiles (mSGPs), in the 2022-23 school year.

School Highlights Reported by the District:

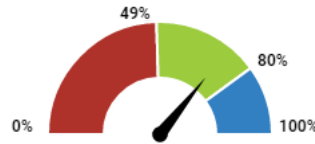
- The Lewis F. Cole Intermediate and Middle School campus services a total of approximately 1200 students in grades 5 through 8. The combined staff total is approximately 180.
- Students in both the Intermediate and Middle School participate in Wellness activities via the use of the Reboot program.
- Our Student Ambassador Team completed over 300 community service hours last school year.

How did students perform on assessments?

This section shows the percentage of students who met or exceeded expectations on statewide assessments (NJSLA and DLM). This percentage reflects the federal proficiency rate which makes adjustments to the proficiency rate if the participation rate was below 95% to ensure reporting on at least 95% of students. The chart indicates whether performance was above the state average or above the state's long-term goal of 80%.

English Language Arts

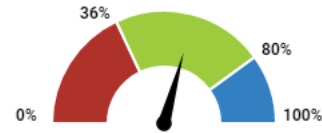
- Below State: 0 - 48.9%
- Met State: 49 - 79.9%
- Met Goal: 80 - 100%



71.6%
Met State

Mathematics

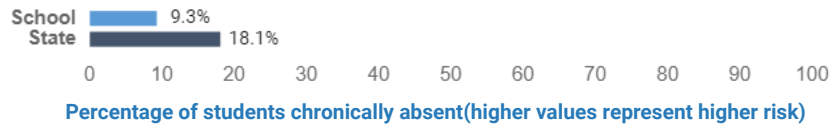
- Below State: 0 - 35.9%
- Met State: 36 - 79.9%
- Met Goal: 80 - 100%



58.6%
Met State

Are students at risk?

This section shows percentage of students that were absent for 10% or more of the days enrolled with a comparison to the state average.



How to use this report?

- 1 **Learn More** by viewing this full report and reports for other schools and districts. Use the green menu bar at the top of the page to move between different sections of the report.
- 2 **Start Conversations** with school community members and ask questions. Use our guides for suggestions.
- 3 **Engage** with your school communities to identify where schools are doing well and where they can improve.

www.state.nj.us/education
www.njschooldata.org

reportcard@doe.nj.gov