

County: Bergen  
 District: Fort Lee School District  
 467 Stillwell Avenue  
 Fort Lee, NJ 07024-2140

2022-2023  
 Principal: Mr. William Diaz  
[School Website](#)  
 201-585-4660

	<b>1,172</b> Total Students		<b>05-08</b> Grades Offered		<b>7.5%</b> English Learners
	<b>16.9%</b> Students with Disabilities		<b>11.6 years</b> Avg Teacher Experience		<b>13.6%</b> Economically Disadvantaged
	<b>11:1</b> Student to Teacher Ratio				

The summary reports are meant to provide parents, educators, and communities highlights from the district, along with a high-level summary of how well a school or district is performing. We encourage you to use these reports to:

- **Learn more** about this school or district by viewing the detailed report. Use the link in the "Jump to" menu at the top right.
- **Start conversations** with school community members and ask questions. Use the one-page guides on the [Resources page](#) for suggestions.
- **Engage** with your school communities to identify where schools are doing well and where they can improve.

## School Highlights Reported by the District:

- The Lewis F. Cole Intermediate and Middle School campus services a total of approximately 1200 students in grades 5 through 8. The combined staff total is approximately 180.
- Students in both the Intermediate and Middle School continued to participate in character education activities.
- Our Student Ambassador Team completed over 300 community service hours last school year and this fall assisting our Multiple Disability students and elementary students during Unified Arts class.

## How does student growth compare to other students?

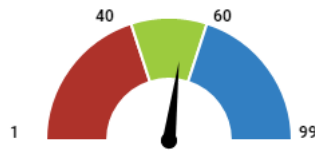
This section shows the median student growth percentile for English Language Arts (ELA) and mathematics.

Each student gets a **student growth percentile (SGP)** from 1 to 99 for English (4th to 8th grade) and Math (4th to 7th grade) that explains their progress compared to students who had similar test scores in the past.

If the student growth percentiles for all students in the school are ordered from smallest to largest, the **median student growth percentile (mSGP)** is the percentile in the middle of that list.

### English Language Arts

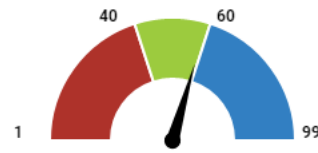
- Below Standard: 1 - 39.5
- Met Standard: 40 - 59.5
- Exceeds Standard: 60 - 99



**54**  
Met Standard

### Mathematics

- Below Standard: 1 - 39.5
- Met Standard: 40 - 59.5
- Exceeds Standard: 60 - 99



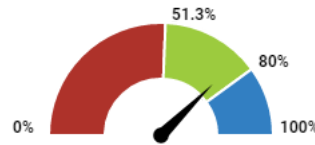
**59**  
Met Standard

## How did students perform on assessments?

This section shows the percentage of students who met or exceeded expectations on statewide assessments (NJSLA and DLM). This percentage reflects the federal proficiency rate which makes adjustments to the proficiency rate if the participation rate was below 95% to ensure reporting on at least 95% of students. The chart indicates whether performance was above the state average or above the state's long-term goal of 80%.

### English Language Arts

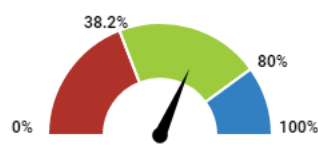
- Below State: 0 - 51.2%
- Met State: 51.3 - 79.9%
- Met Goal: 80 - 100%



**75.2%**  
Met State

### Mathematics

- Below State: 0 - 38.1%
- Met State: 38.2 - 79.9%
- Met Goal: 80 - 100%



**63.3%**  
Met State

### How to use this report?

- 1 **Learn More** by viewing this full report and reports for other schools and districts. Use the green menu bar at the top of the page to move between different sections of the report.
- 2 **Start Conversations** with school community members and ask questions. Use our guides for suggestions.
- 3 **Engage** with your school communities to identify where schools are doing well and where they can improve.



[www.state.nj.us/education](http://www.state.nj.us/education)

[www.njschooldata.org](http://www.njschooldata.org)



[reportcard@doe.nj.gov](mailto:reportcard@doe.nj.gov)



# Lewis F. Cole Middle School (03-1550-100)

County: Bergen  
District: Fort Lee School District  
467 Stillwell Avenue  
Fort Lee, NJ 07024-2140

2022-2023  
Principal: Mr. William Diaz  
[School Website](#)  
201-585-4660

## Are students at risk?

This section shows percentage of students that were absent for 10% or more of the days enrolled with a comparison to the state average.

